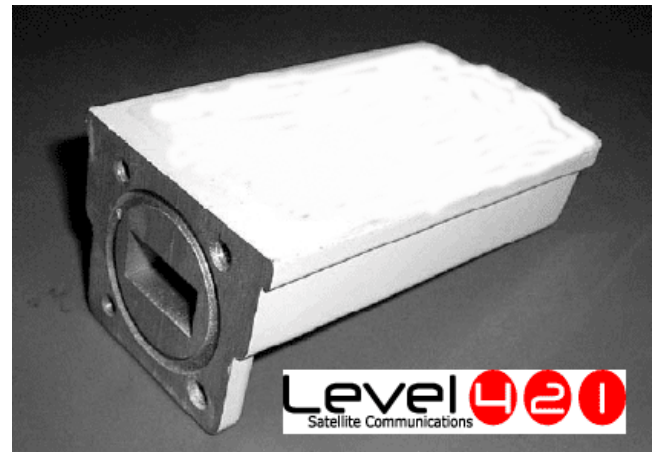


Ku-Band PLL LNB



Frequency

| Model Number | Input GHz | Output (MHz) | L.O (GHz) |
|-------------------|---------------|--------------|-----------|
| Low Band PLL LNB | 10.95 – 11.7 | 950 - 1700 | 10.0 |
| High Band PLL LNB | 12.25 – 12.75 | 950 - 1450 | 11.3 |

Parameter

| | |
|-----------------------------|----------------------|
| Noise figure (@ +25°C) | 0.7 to 1.2 dB max |
| Input VSWR | 2.5 : 1 typ |
| Image rejection | 40 dBc min. |
| Conversion gain | 55 dB typ. |
| Output VSWR | 2 : 1 typ. |
| Gain flatness | 4 dBp-p max. |
| Gain ripple (@ per channel) | +/-0.75dB max. |
| 1dB gain compression point | 0 dBm typ. |
| Output impedance | 75 ohms |
| Phase noise | -80 dBc/Hz (@10KHz) |
| | -95 dBc/Hz (@100KHz) |
| | -110 dBc/Hz (@1MHz) |

| | |
|------------------------|-----------------|
| Power supply | +12 to +24V DC |
| Required current | 250 mA max. |
| Operating temperature | -30°C to +60°C |
| Storage temperature | -40 °C to +80°C |
| Relative humidity | 0% to 95% RH |
| Input waveguide flange | WR-75 |
| IF output connector | F-type female |
| Weight | 405 g |

Outline Drawing

