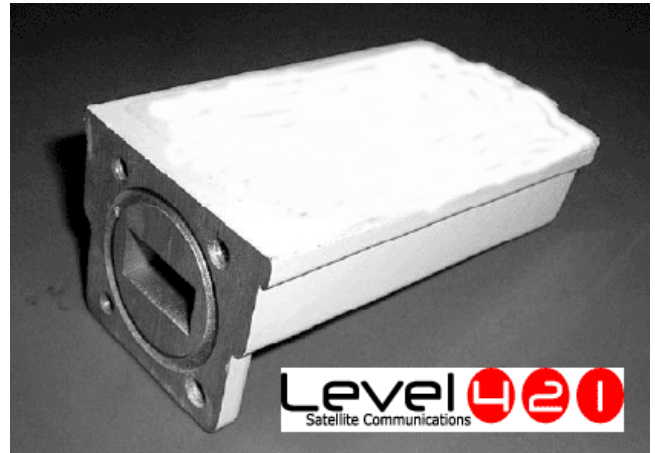


C-Band DRO LNB



Frequency

| Model Number | Input GHz | Output (MHz) | L.O (GHz) & Stability (Over Temp.) (KHz) |
|--------------|-----------|--------------|--|
| C DRO LNB | 3.4 – 4.2 | 950 - 1750 | 5.15 +/-500 |

Specifications

| | |
|-----------------------------|----------------------------------|
| Noise temperature (@ +25°C) | 30'K max |
| Input VSWR | 2.5 : 1 max. |
| Image rejection | 45 dBc min. |
| Conversion gain | 60 dB typ. (55dB min. 70dB max.) |
| Output VSWR | 2.5 : 1 max. |
| Gain flatness | 6 dBp-p max. |
| Gain ripple (@ per 27MHz) | 1 dB p-p max. |
| 1dB gain compression point | +3 dBm min. |
| Output impedance | 75 ohms |
| Phase noise | -80 dBc/Hz (@10KHz) |
| | -95 dBc/Hz (@100KHz) |
| | -110 dBc/Hz (@1MHz) |
| Power supply | +12 to +24V DC |

| | |
|------------------------|-----------------|
| Required current | 150 mA max. |
| Operating temperature | -30°C to +60°C |
| Storage temperature | -40 °C to +80°C |
| Relative humidity | 0% to 95% RH |
| Input waveguide flange | WR-229 |
| IF output connector | F-type female |
| Weight | 245 g |

Outline Drawing

